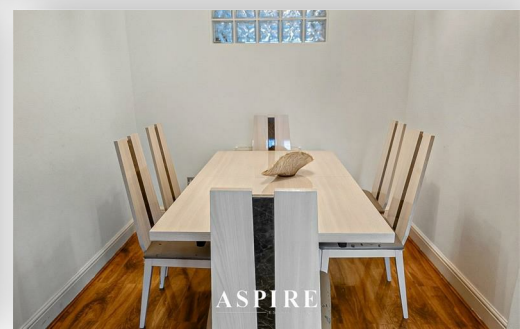
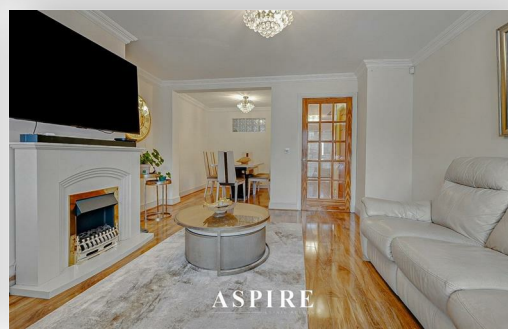
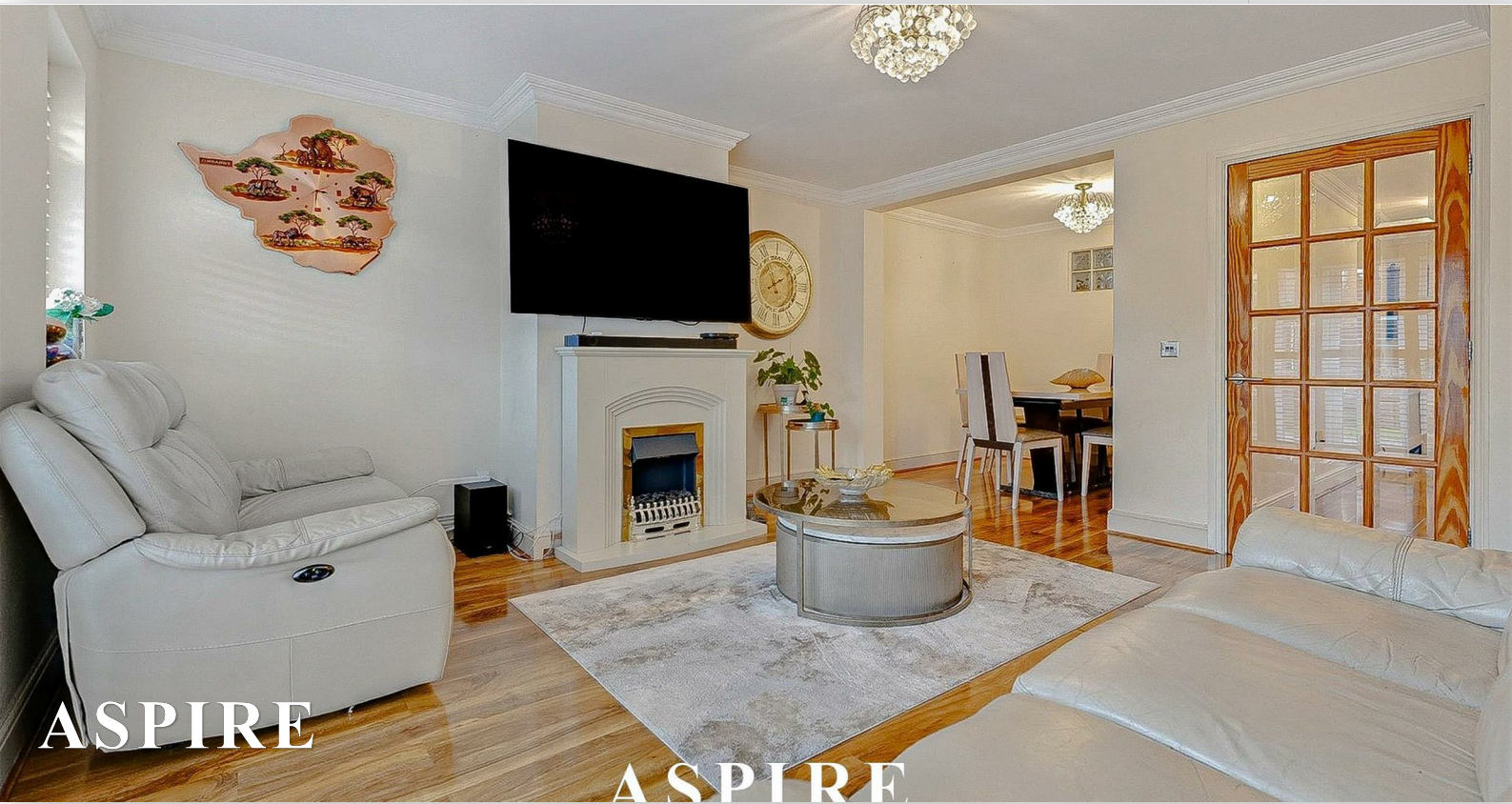


To arrange a viewing contact us
today on 01268 777400



Chase Gardens, Westcliff-On-Sea Guide price £500,000

Aspire Estate Agents are delighted to present this impressive three-bedroom semi-detached family home, arranged over three floors and located in a highly sought-after residential area close to local amenities, Southend Hospital, and excellent grammar schools. Well-presented throughout, it offers style, space, and convenience, perfect for growing families.

The bright entrance hallway sets the tone, leading to a modern kitchen with ample worktop space, integrated appliances, and smart storage. A useful cloakroom sits beneath the stairs. The open-plan lounge/diner provides a generous family space, with large French doors opening onto the west-facing rear garden, filling the room with natural light.

The first floor offers two spacious double bedrooms, including the master suite with built-in wardrobes and a contemporary en-suite shower room. A modern family bathroom complements this level. The second floor features an additional double bedroom with built-in storage, ideal as a guest room, teenager's space, or home office.

Outside, the west-facing garden includes a paved seating area and artificial lawn for low-maintenance enjoyment. Secure gated access leads to a private garage and off-street parking for two cars.

Situated in a quiet, family-friendly location within easy reach of Southend Hospital, Southend Airport, transport links, and top-performing schools, this property represents an excellent opportunity for those seeking a modern, spacious, and well-connected home.

A superb example of comfortable and practical family living.

GUIDE PRICE £500,000-£525,000

www.aspireestateagents.co.uk

Ground Floor

Hallway- 1.96m x 5.92m (19.5ft x 6.6ft)

Kitchen- 2.64m x 4.35m (14.3ft x 8.08ft)

WC

Lounge/Diner- 4.60m x 6.73m (22.2ft x 13.9ft)

First Floor

First Floor Landing- 1.94m x 3.75m (12.6ft x 6.5ft)

Master Bedroom- 3.68m x 3.97m (13.3ft x 12.01ft)

En-Suite

Bedroom Two- 3.68m x 2.50m (15.1ft x 9.9ft)

Second Floor

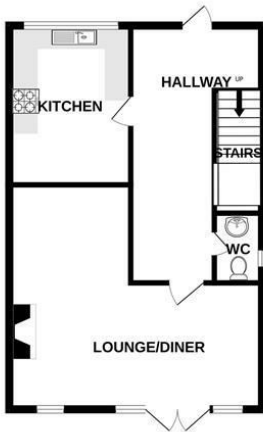
Bedroom Three- 2.98m x 3.20m (9.9ft x 10.6ft)

Bathroom- 1.74m x 2.61m (8.7ft x 5.8ft)

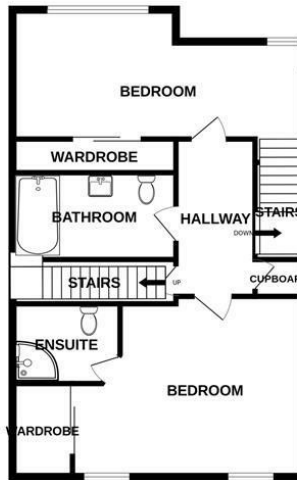
Garden

Garage

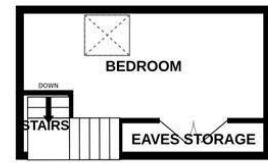
GROUND FLOOR
641 sq.ft. (59.6 sq.m.) approx.



1ST FLOOR
702 sq.ft. (65.2 sq.m.) approx.



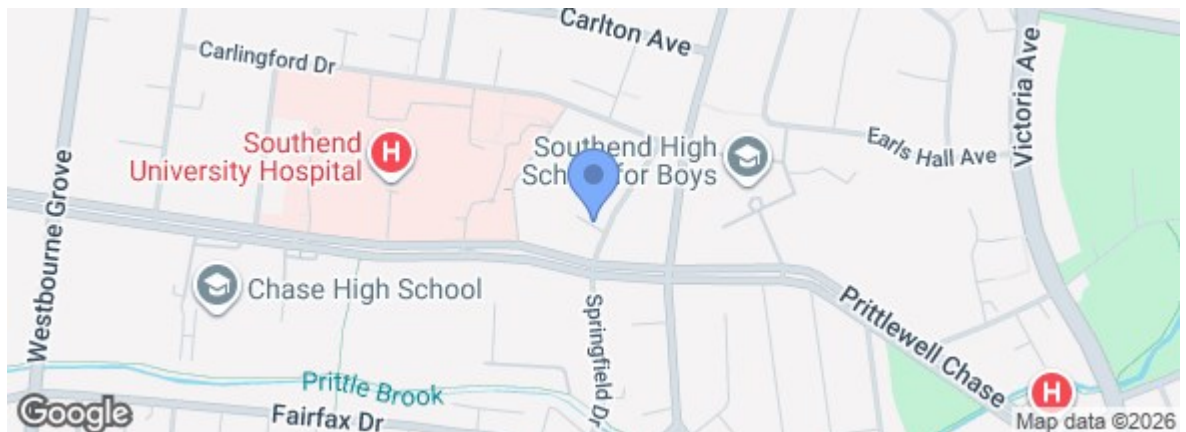
2ND FLOOR
193 sq.ft. (17.9 sq.m.) approx.



TOTAL FLOOR AREA : 1536 sq.ft. (142.7 sq.m.) approx.

Whilst every attempt has been made to ensure the accuracy of the floorplan contained here, measurements of doors, windows, rooms and any other items are approximate and no responsibility is taken for any error, omission or mis-statement. This plan is for illustrative purposes only and should be used as such by any prospective purchaser. The services, systems and appliances shown have not been tested and no guarantee as to their operability or efficiency can be given.
Made with Metropix ©2025

Energy Efficiency Rating		Current	Potential
Very energy efficient - lower running costs			
(92 plus)	A		
(81-91)	B		
(69-80)	C		
(55-68)	D		
(39-54)	E		
(21-38)	F		
(1-20)	G		
Not energy efficient - higher running costs			
		77	82
England & Wales		EU Directive 2002/91/EC	
Environmental Impact (CO ₂) Rating			
Very environmentally friendly - lower CO ₂ emissions			
(92 plus)	A		
(81-91)	B		
(69-80)	C		
(55-68)	D		
(39-54)	E		
(21-38)	F		
(1-20)	G		
Not environmentally friendly - higher CO ₂ emissions			
England & Wales		EU Directive 2002/91/EC	



Under the Property Misdescriptions Act 1991 we make every effort to ensure our sales details are accurate but they are a general outline and do not constitute any part of an offer or contract. Any services, equipment and fittings have not been tested and no warranty can be given as to their condition. We strongly recommend that all the information provided be verified by your advisors and in particular, measurements required for a specific purpose such as fitted furniture or carpets. Please tell us if you have any problems and members of our branches will help either over the phone or in person. A copy of our complaints procedure is available on request. The details are issued on the strict understanding that any negotiations in respect of the property named herein are conducted through Aspire Estate Agents.